

Chairs/Presidents of the  
California Chamber of Commerce:  
Present to Past



# Janet A. Liang

Executive Vice President, Group President and Chief  
Operation Officer, Care Delivery  
Board Chair, California Chamber of Commerce  
2024



# Gregory S. Bielli

President and Chief Executive Officer

Tejon Ranch Company

Board Chair, California Chamber of Commerce

2023



# Kailesh Karavadra

Senior Partner

Ernst & Young LLP

Board Chair, California Chamber of Commerce

2022



# Donna L. Lucas

President and Chief Executive Officer,  
Lucas Public Affairs  
Board Chair, California Chamber of Commerce  
2021



# Mark Jansen

President and Chief Executive Officer,  
Blue Diamond Growers  
Board Chair, California Chamber of Commerce  
2020



# Grace Evans Cherashore

Executive Chairwoman,  
Evans Hotels

Board Chair, California Chamber of Commerce  
2019



# Terry MacRae

Chief Executive Officer, President and Founder  
Hornblower Cruises & Events  
Board Chair, California Chamber of Commerce  
2018





# Susan Corrales-Diaz

President and Chief Executive Officer,  
Systems Integrated  
Board Chair, California Chamber of Commerce  
2017



# Michael W. Murphy

President and Chief Executive Officer,  
Sharp HealthCare  
Board Chair, California Chamber of Commerce  
2016



# Joseph M. Otting

President and Chief Executive Officer,  
OneWest Bank N.A.

Board Chair, California Chamber of Commerce  
2015



# Anne Buettner

Senior Vice President,  
The Walt Disney Company  
Board Chair, California Chamber of Commerce  
2014



# Frederick E. Hitchcock

Chairman and Chief Executive Officer,  
Hitchcock Automotive Resources  
Board Chair, California Chamber of Commerce  
2013



# Timothy S. Dubois

President, The Edward Thomas Collection  
Board Chair, California Chamber of Commerce  
2012



# S. Shariq Yosufzai

Vice President, Chevron Corporation  
Board Chair, California Chamber of Commerce  
2011



# Larree M. Renda

Executive Vice President, Chief Strategist and  
Administrative Officer, Safeway Inc.

Board Chair, California Chamber of Commerce  
2010





# Frederick R. Ruiz

Co-Chairman and Co-Chief Executive Officer,  
Ruiz Foods  
Board Chair, California Chamber of Commerce  
2009



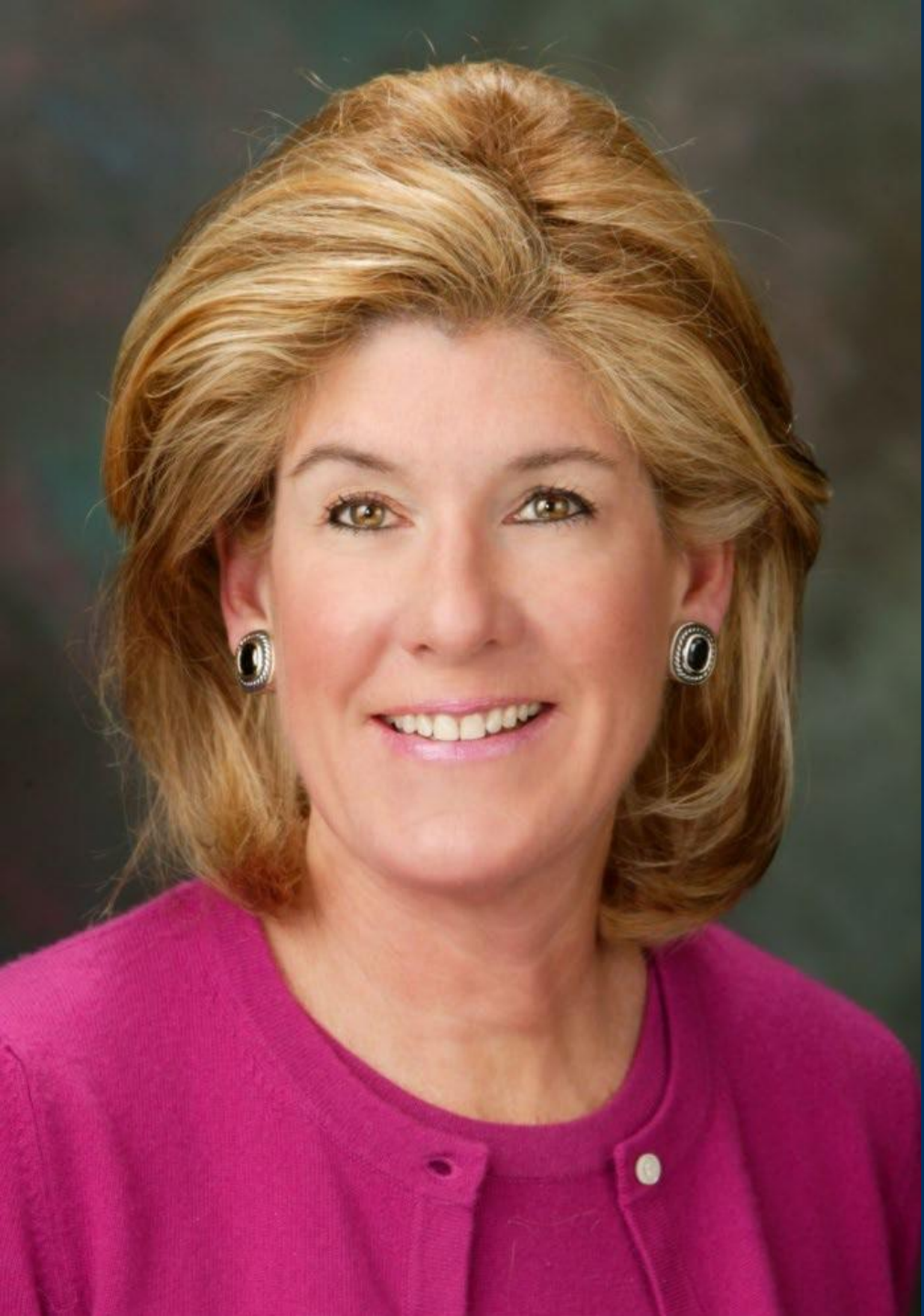
## Edwin A. Guiles

Executive Vice President, Corporate Development,  
Sempra Energy  
Board Chair, California Chamber of Commerce  
2008



# Russell Gould

Senior Managing Director,  
Wachovia Portfolio Services  
Board Chair, California Chamber of Commerce  
2007



# Donna F. Tuttle

Co-Owner and Chairman,  
Elmore Tuttle Sports Group  
Board Chair, California Chamber of Commerce  
2006



# Eugene J. Voiland

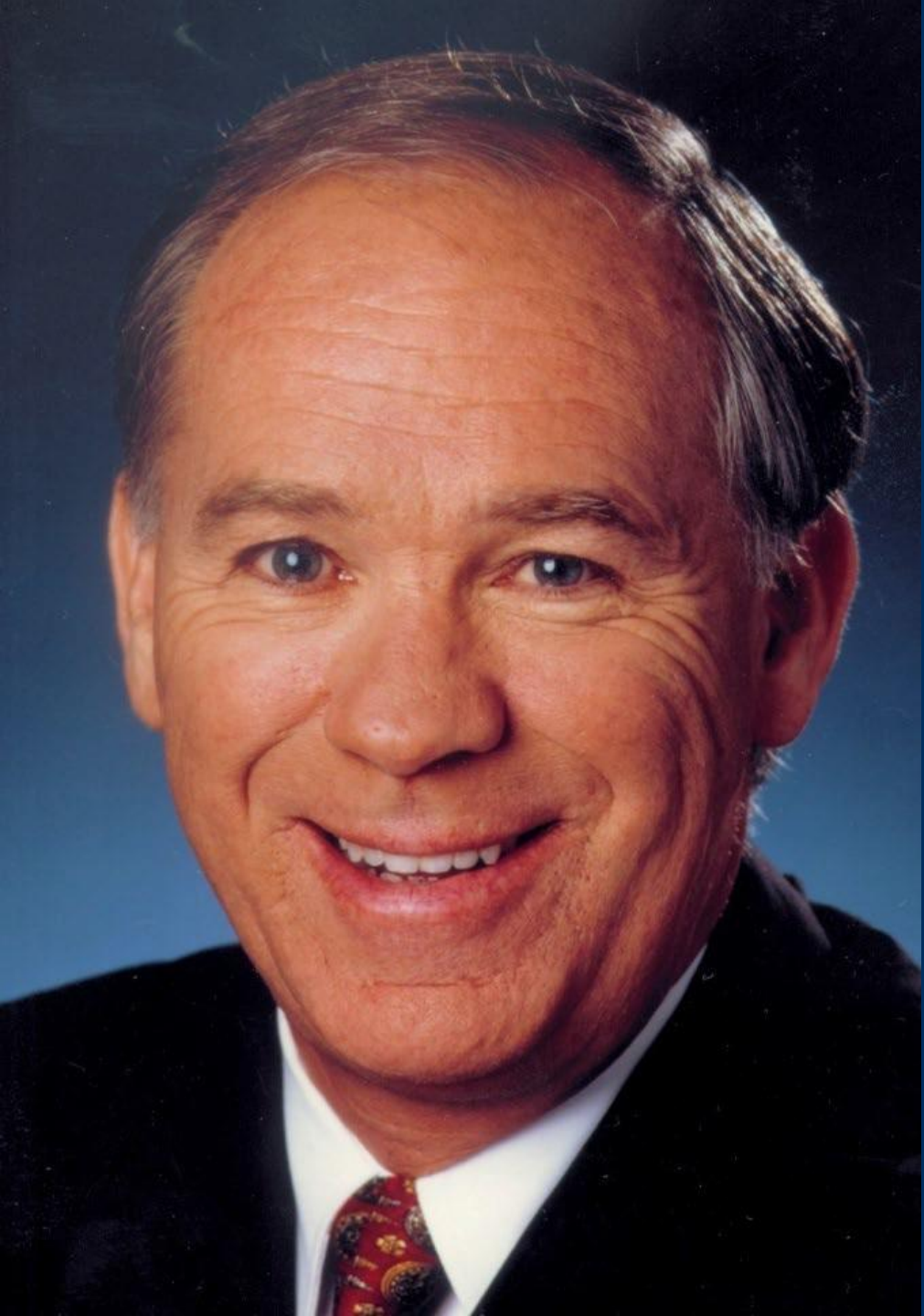
President and Chief Executive Officer,  
Aera Energy, LLC

Board Chair, California Chamber of Commerce  
2005



# John W. Koeberer

Owner and Chief Executive Officer,  
California Parks Companies  
Board Chair, California Chamber of Commerce  
2004



# Raymond W. Holdsworth

President,  
AECOM Technology Corporation  
Board Chair, California Chamber of Commerce  
2003



# Tom C. Stickel

Chairman and Chief Executive Officer,  
University Ventures Network  
Board Chair, California Chamber of Commerce  
2002





# Walter F. Payne, Jr.

President Emeritus,  
Blue Diamond Growers  
Board Chair, California Chamber of Commerce  
2001



# David H. Watts

Chairman and President,  
Granite Construction Inc.  
Board Chair, California Chamber of Commerce  
2000



# Gary M. Cusumano

President,  
The Newhall Land & Farming Company  
Board Chair, California Chamber of Commerce  
1999



# Amy McCombs

President,  
Chronicle Broadcasting Company  
Board Chair, California Chamber of Commerce  
1998



# Thomas V. McKernan, Jr.

President,  
Automobile Club of Southern California  
Board Chair, California Chamber of Commerce  
1997



# Stanley T. Skinner

Chairman of the Board,  
Pacific Gas and Electric Company  
Chairman, California Chamber of Commerce  
1996



# Roger J. Baccigaluppi

Chairman,  
RB International  
Chairman, California Chamber of Commerce  
1995



# Richard J. Stegemeier

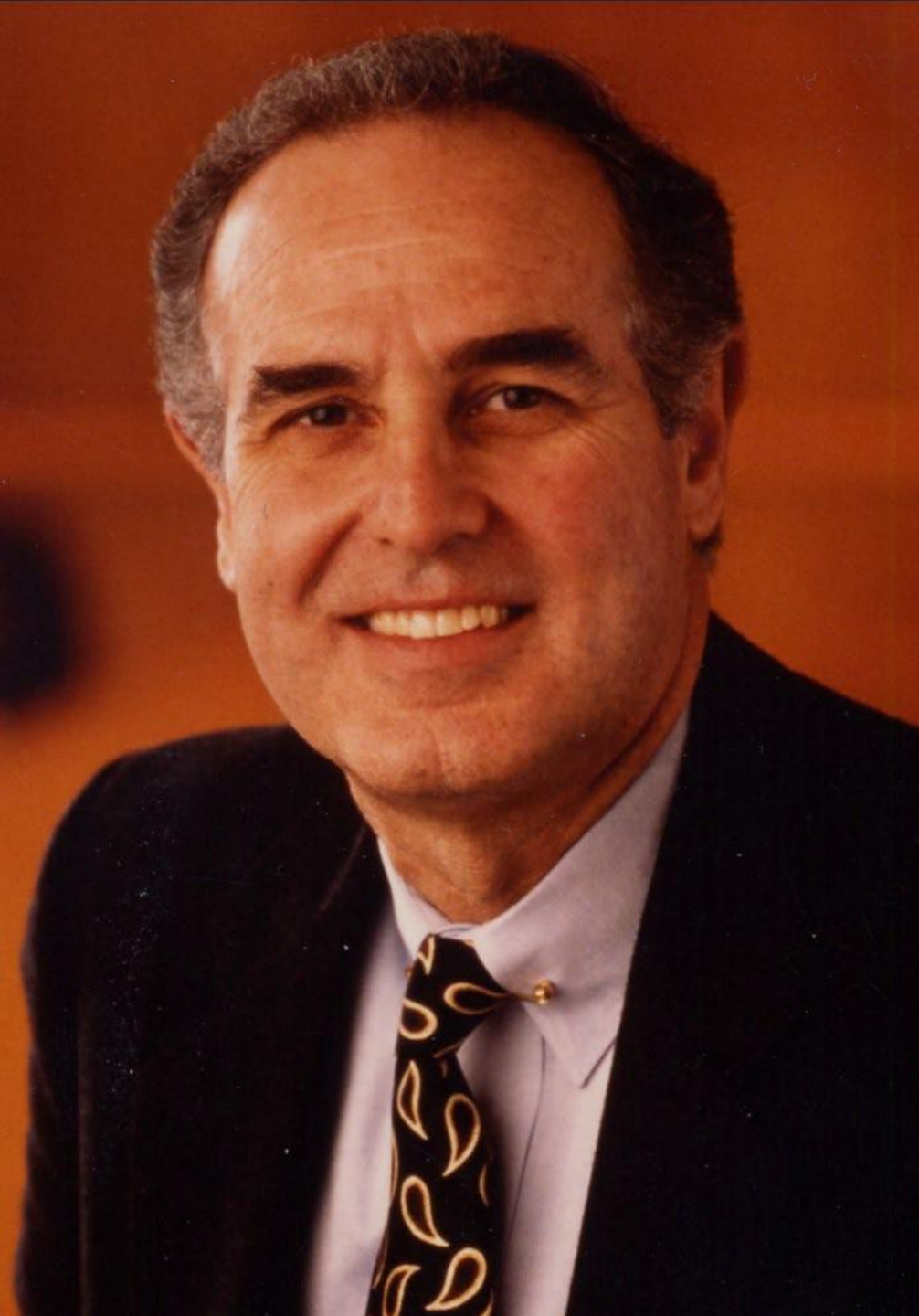
Chairman of the Board,  
Unocal Corporation  
Chairman, California Chamber of Commerce  
1994





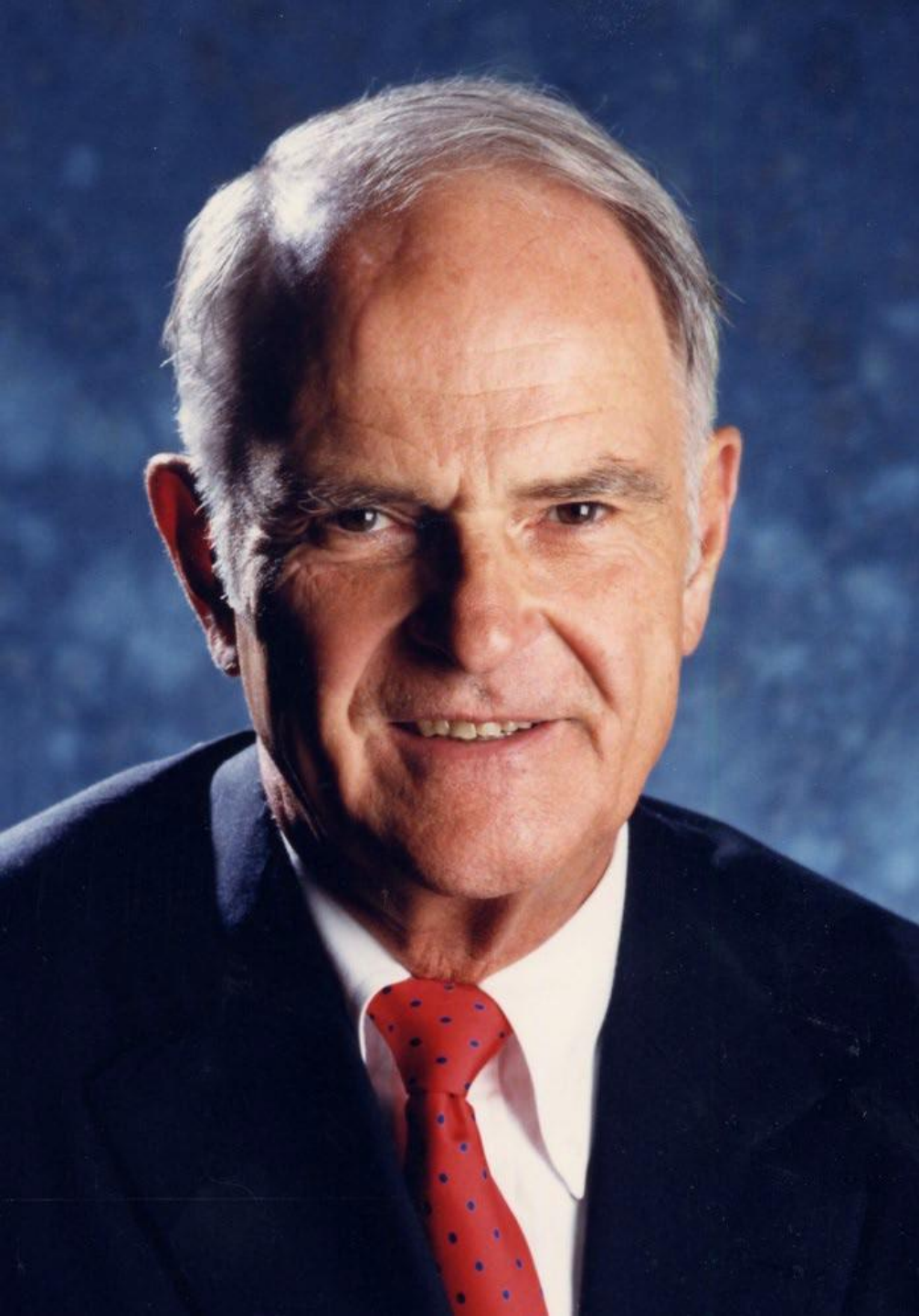
# Wilford D. Godbold, Jr.

President,  
Zero Corporation  
Chairman, California Chamber of Commerce  
1993



# Philip J. Quigley

President,  
Pacific Bell  
Chairman, California Chamber of Commerce  
1992



## Willard Z. Carr, Jr.

Partner,  
Gibson, Dunn & Crutcher  
Chairman, California Chamber of Commerce  
1991



# Stanley A. Wainer

Chairman of the Board,  
Wyle Laboratories

Chairman, California Chamber of Commerce  
1990



# Peter F. Scott

Chairman of the Board,  
DiGiorgio Corporation  
Chairman, California Chamber of Commerce  
1989



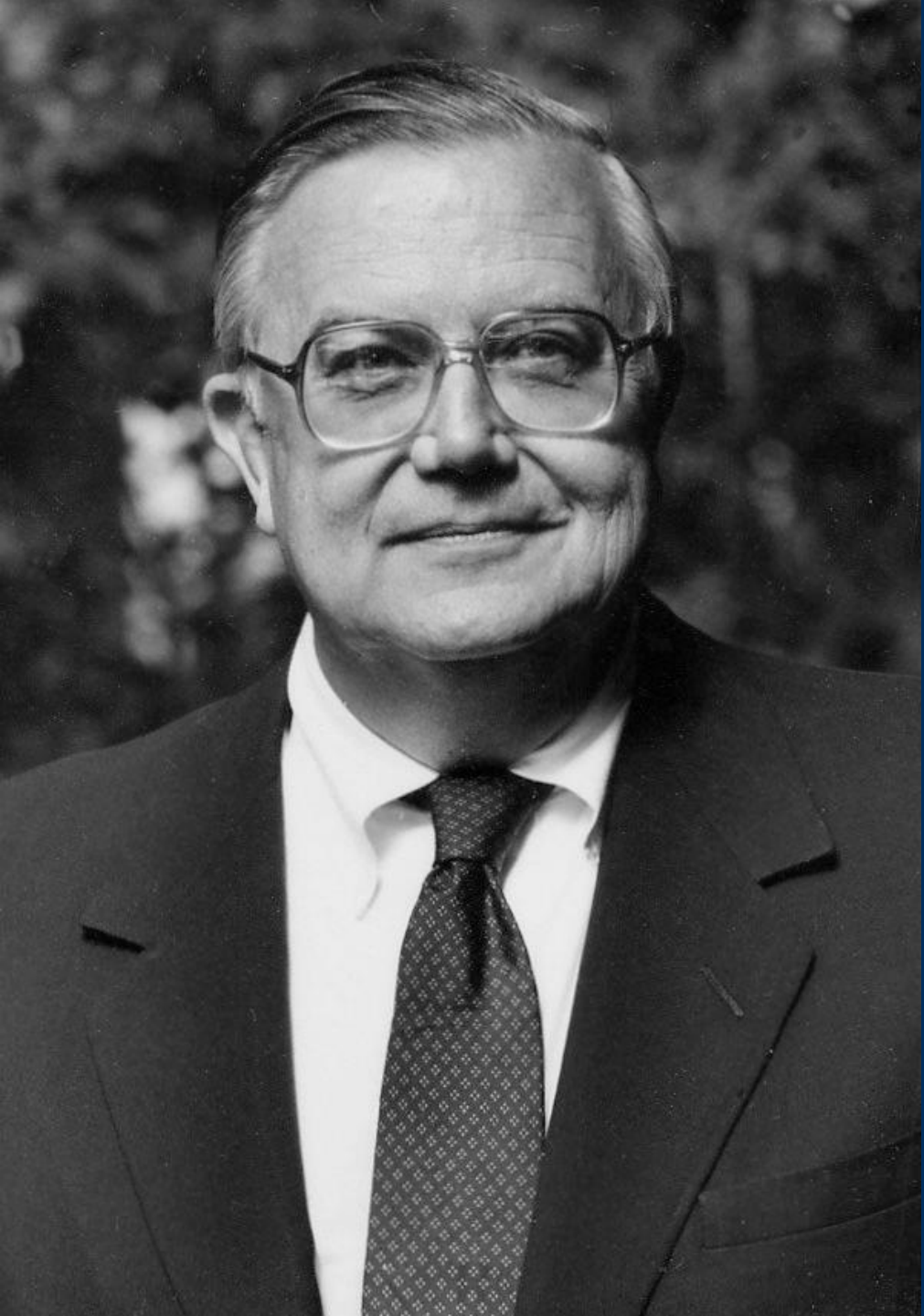
# Howard P. Marguleas

Chairman of the Board,  
Sun World International, Inc  
Chairman, California Chamber of Commerce  
1988



# John V. Diepenbrock

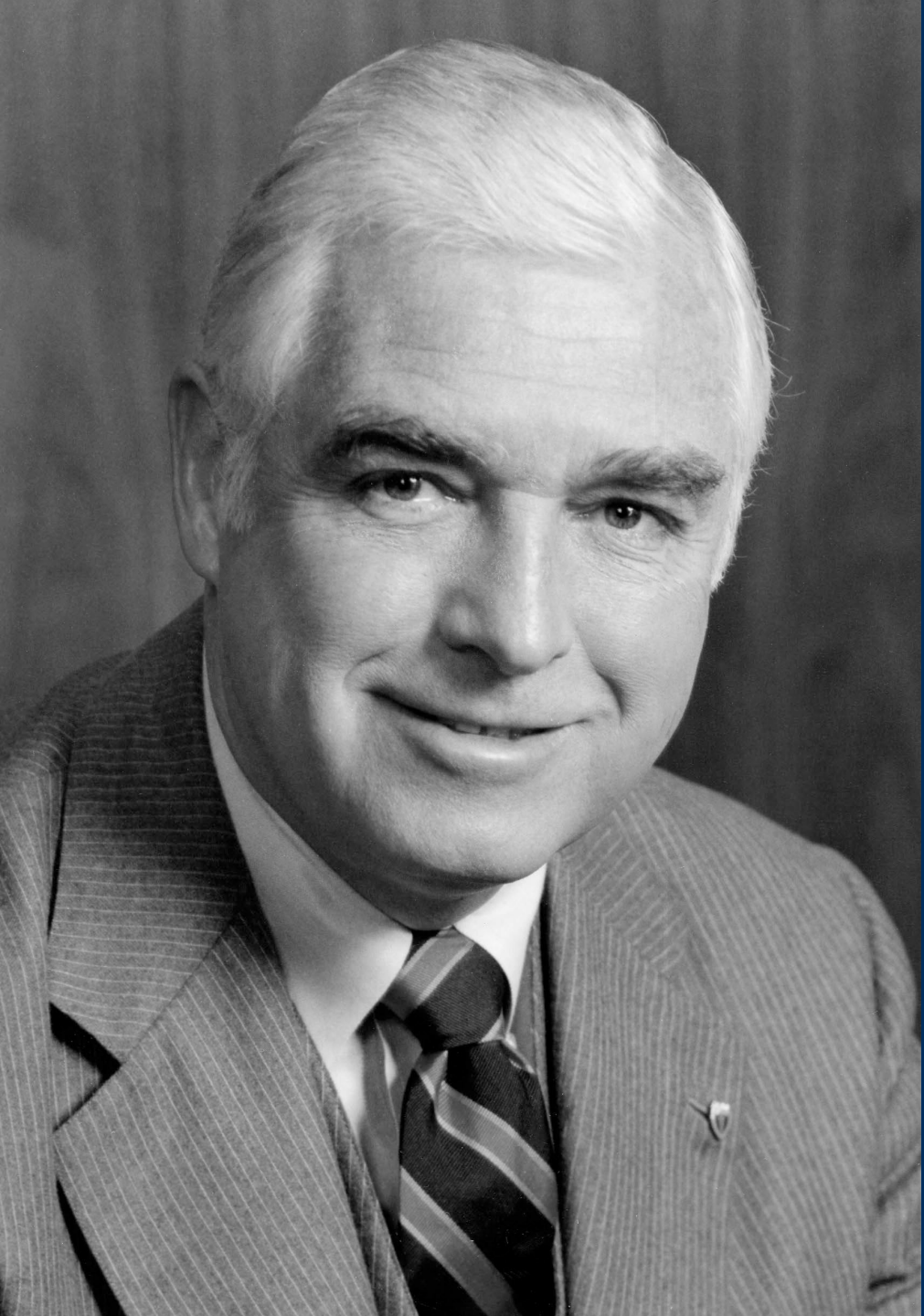
Partner,  
Diepenbrock, Wulff, Plant & Hannegan  
Chairman, California Chamber of Commerce  
1987



# James F. Dickason

Chairman of the Board,  
The Newhall Land & Farming Company  
Chairman, California Chamber of Commerce  
1986





# Thomas C. Paton

President,  
Blue Sheild of California  
Chairman, California Chamber of Commerce  
1985



## E.H. Clark, Jr.

Chairman of the Board,  
Baker International Corporation  
Chairman, California Chamber of Commerce  
1984



# Clay McGowan

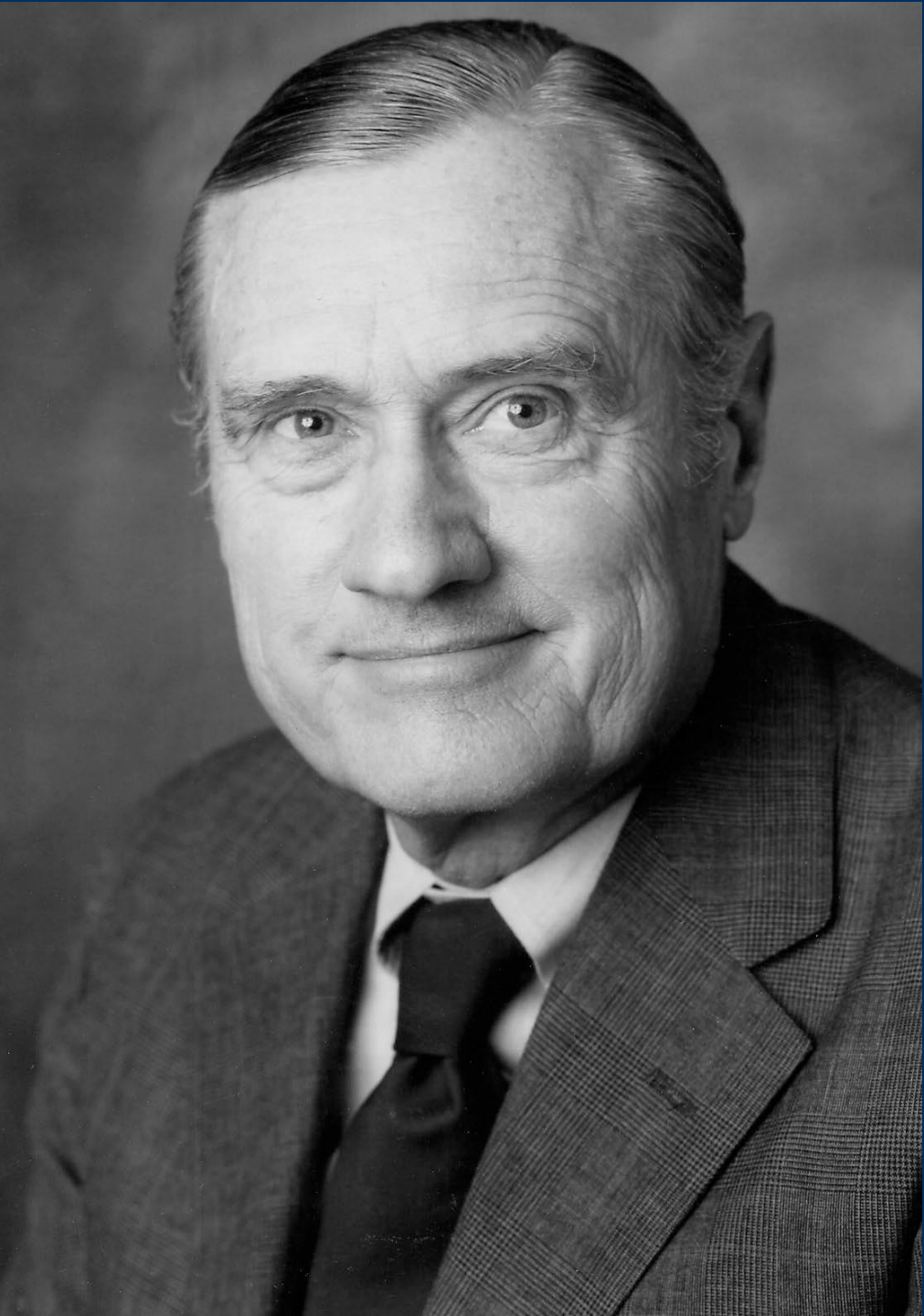
Clay McGowan and Associates  
President, California Chamber of Commerce  
1983



# Dr. Shirley R. Chilton

Chairman of the Board,  
Clavis Corporation

President, California Chamber of Commerce  
1982



# Dr. Dean A. Watkins

Chairman of the Board,  
Watkins-Johnson Company  
President, California Chamber of Commerce  
1981



# Robert R. Dockson

Chairman of the Board,  
California Federal Savings and Loan Association  
President, California Chamber of Commerce  
1980



# Gordon K. Van Vleck

Van Vleck Ranch

President, California Chamber of Commerce

1979



# Dr. William F. Ballhaus

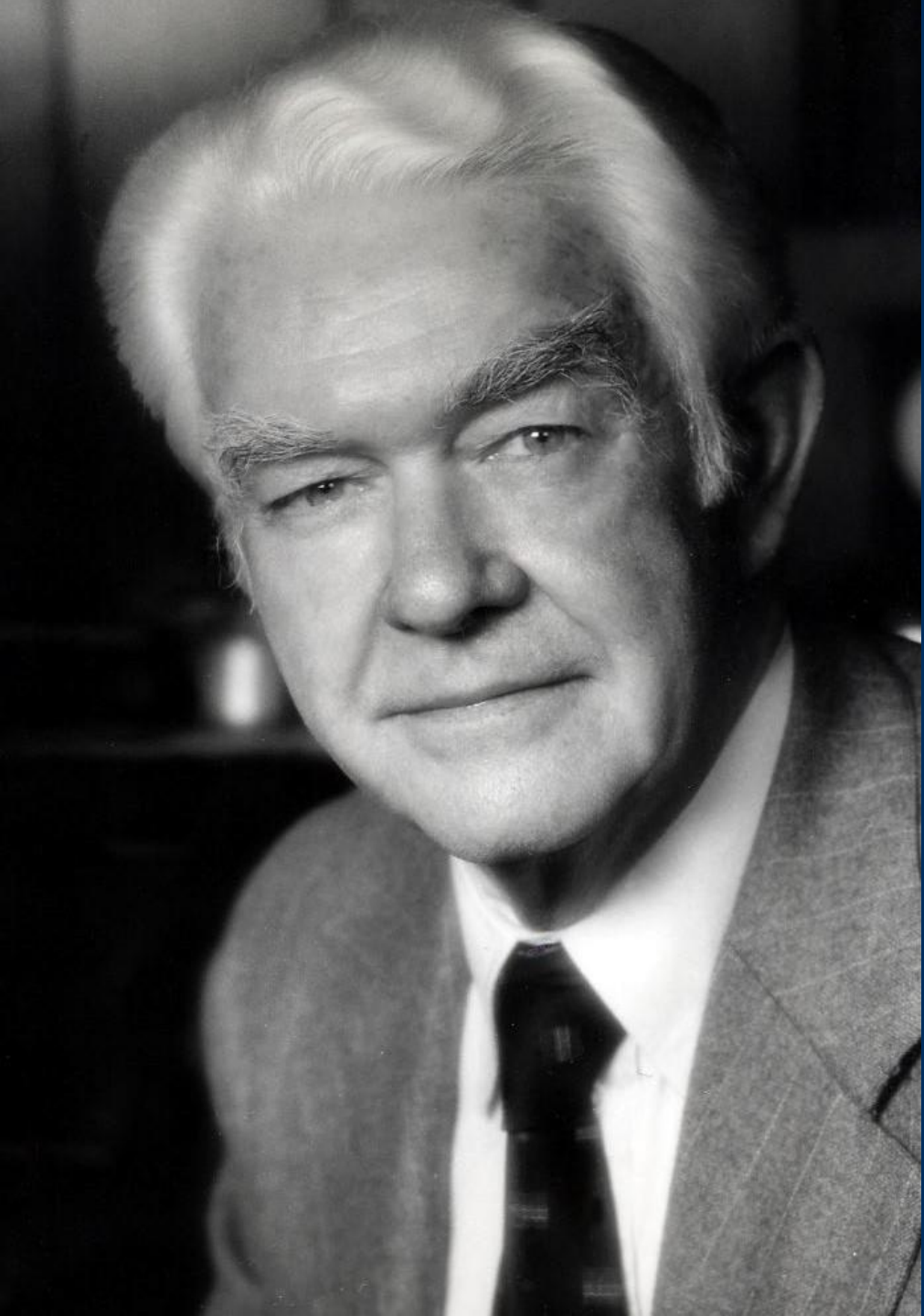
President,  
Beckman Instruments, Inc.  
President, California Chamber of Commerce  
1978





# Walter M. Baird

Partner,  
Price Waterhouse  
President, California Chamber of Commerce  
1977



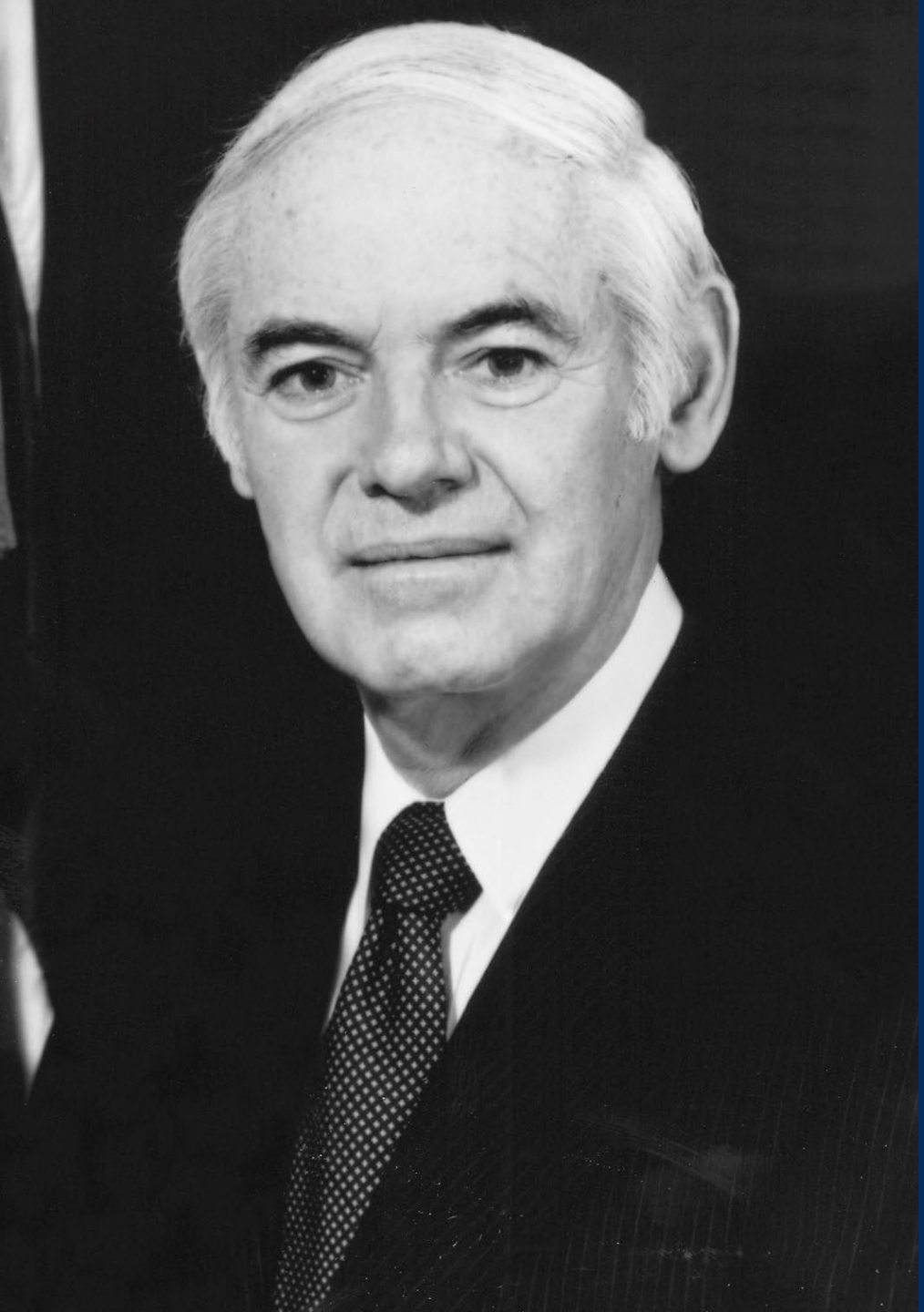
## William A. Simpson, Jr.

Chairman of the Board,  
Booth and Simpson Insurance  
President, California Chamber of Commerce  
1976



# Stuart Davis

Chairman of the Board,  
Great Western Financial Corporation  
President, California Chamber of Commerce  
1975



# William French Smith

Partner,  
Gibson, Dunn & Crutcher  
President, California Chamber of Commerce  
1974



# B.F. Biaggini

Chairman of the Board,  
Southern Pacific Company  
President, California Chamber of Commerce  
1973



# Fred L. Hartley

Chairman and President,  
Union Oil Company of California  
President, California Chamber of Commerce  
1972



# Burnham Enersen

Partner,  
McCutchen, Doyle, Brown & Enersen  
President, California State Chamber of Commerce,  
Agriculture and Industry  
1971



# Ernest J. Loebbecke

Chairman of the Board,  
The TI Corporation of California  
President, California State Chamber of Commerce,  
Agriculture and Industry  
1969–1970





# Dr. Arnold O. Beckman

Chairman of the Board,  
Beckman Instruments  
President, California State Chamber of Commerce,  
Agriculture and Industry  
1967–1968



## Joseph A. Moore, Jr.

President,  
Moore Securities Company  
President, California State Chamber of Commerce,  
Agriculture and Industry  
1966



# Milton M. Teague

General Manager,  
Limoneira Company  
President, California State Chamber of Commerce,  
Agriculture and Industry  
1963–1965



# Robert A. Hornby

President,  
Pacific Lighting Corporation  
President, California State Chamber of Commerce,  
Agriculture and Industry  
1961–1962



# Edward R. Valentine

Chairman of the Board and President,  
Robinson Building Company  
President, California State Chamber of Commerce,  
Agriculture and Industry  
1959–1960



## M.R Sullivan

President,  
The Pacific Telephone and Telegraph Company  
President, California State Chamber of Commerce,  
Agriculture and Industry  
1958–1959



## W.C. Mullendore

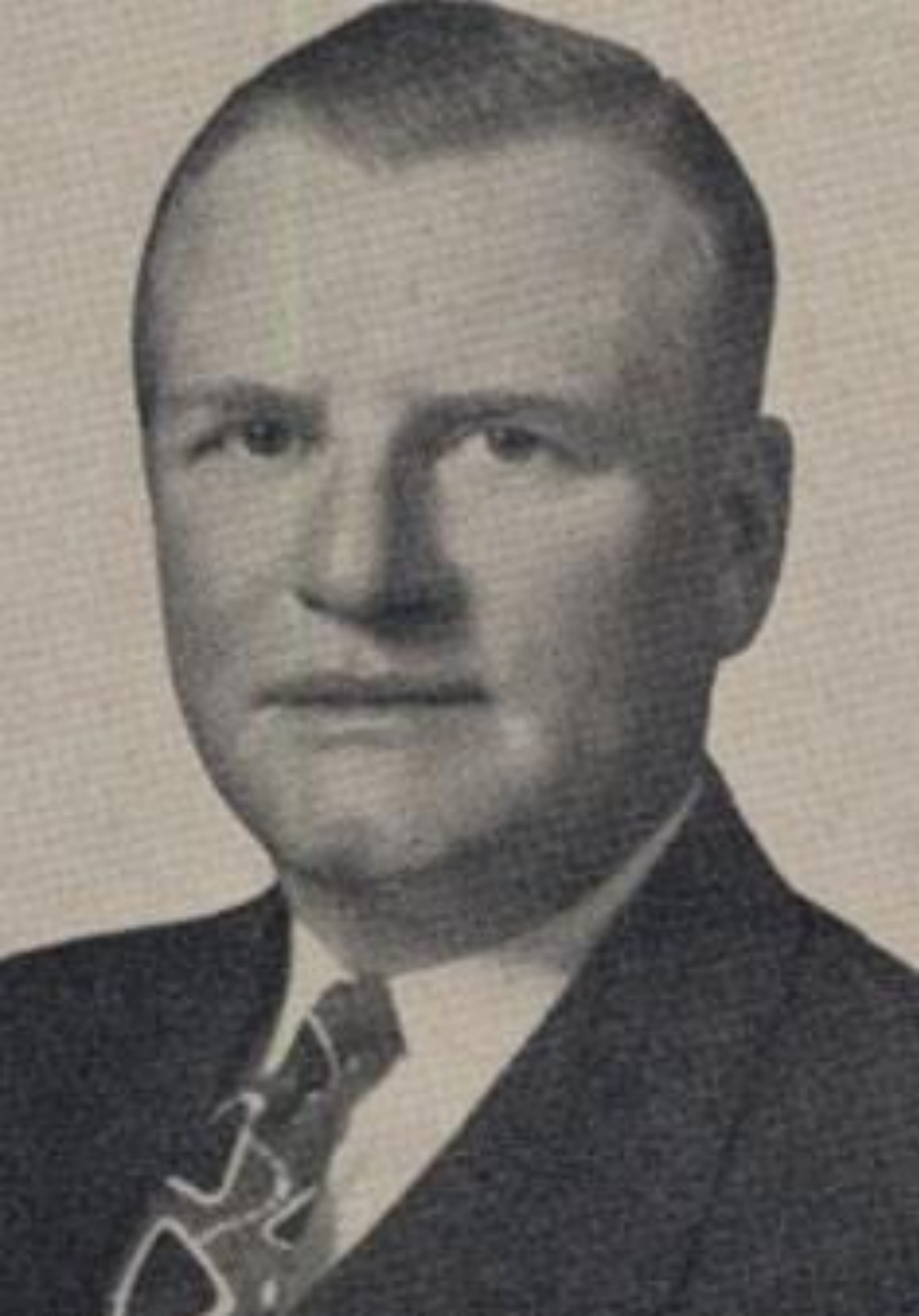
Chairman of the Board,  
Southern California Edison Company  
President, California State Chamber of Commerce,  
Agriculture and Industry  
1956–1958



# Carl F. Wente

President,  
Bank of America N.T. & S.A.  
President, California State Chamber of Commerce,  
Agriculture and Industry  
1954–1956





# Neil Petree

President,  
Barker Brothers Corporation  
President, California State Chamber of Commerce,  
Agriculture and Industry  
1952–1954



## Adrien J. Falk

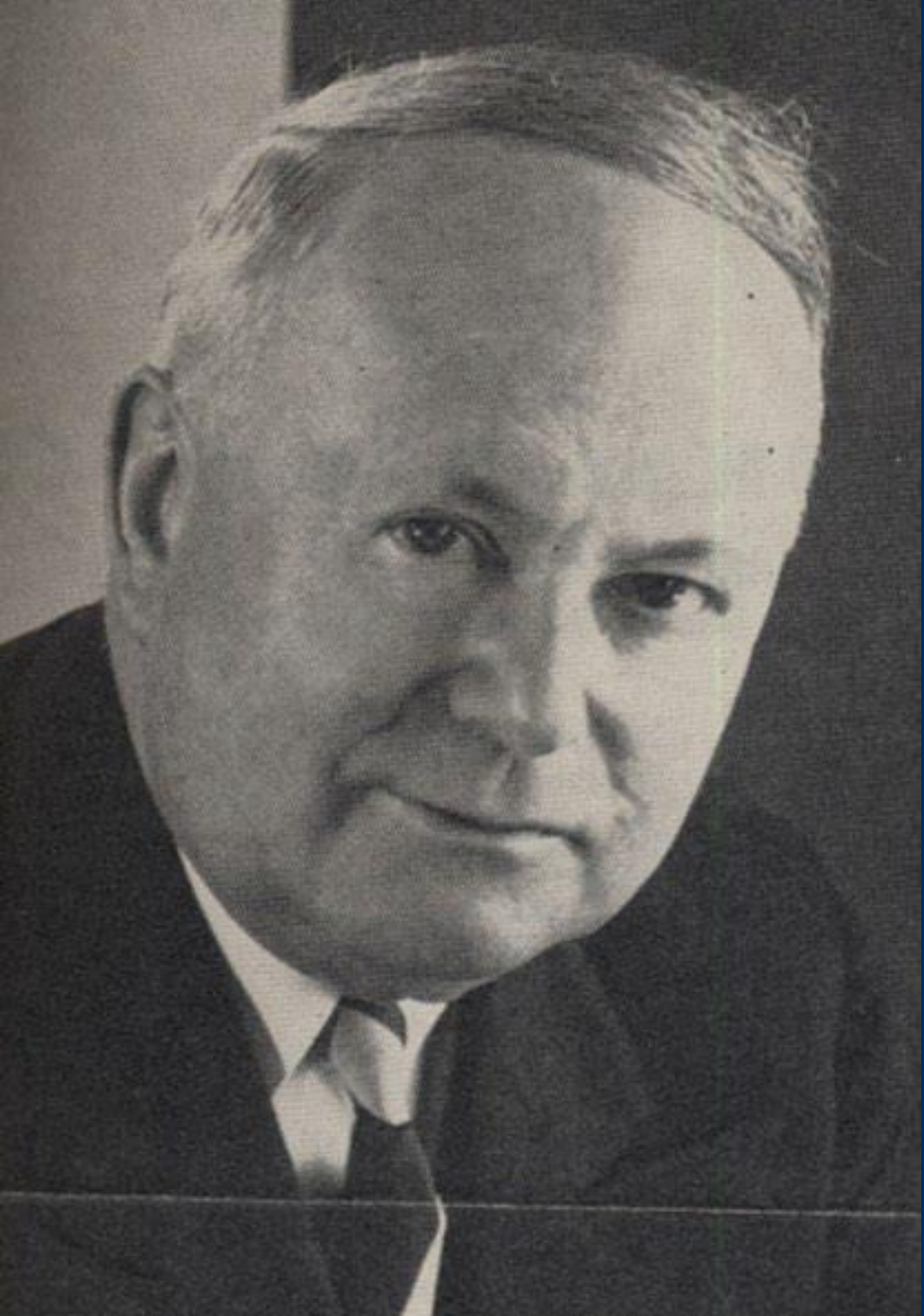
Vice President and General Manager,  
S&W Fine Foods, Inc.

President, California State Chamber of Commerce,  
Agriculture and Industry  
1950–1952



# James E. Shelton

President,  
Security First National Bank of Los Angeles  
President, California State Chamber of Commerce,  
Agriculture and Industry  
1949–1950



# Harry A. Mitchell

Vice President and General Manager,  
The Western Pacific Railroad Company  
President, California State Chamber of Commerce,  
Agriculture and Industry  
1947–1949



## Asa V. Call

Executive Vice President,  
Pacific Mutual Life Insurance Company  
President, California State Chamber of Commerce,  
Agriculture and Industry  
1946–1947



# Harrison S. Robinson

Senior Partner,  
Robinson, Price & Macdonald  
President, California State Chamber of Commerce,  
Agriculture and Industry  
1944–1946



# Preston Hotchkis

Executive Vice President,  
Pacific Indemnity Company  
President, California State Chamber of Commerce,  
Agriculture and Industry  
1942–1944



# Alfred J. Lundberg

President,  
East Bay Transit Company  
President, California State Chamber of Commerce,  
Agriculture and Industry  
1940–1942





# A.J. McFadden

Orchardist

President, California State Chamber of Commerce,  
Agriculture and Industry

1937–1940



# Joseph R. Knowland

Publisher,  
The Oakland Tribune  
President, California State Chamber of Commerce,  
Agriculture and Industry  
1934–1937



# C.C. Teague

President,  
California Fruit Growers Exchange  
President, California State Chamber of Commerce,  
Agriculture and Industry  
1932–1934



# Frederick J. Koster

President,  
California Barrel Company  
President, California State Chamber of Commerce,  
Agriculture and Industry  
1930–1932



# William May Garland

President, W.M. Garland & Company

President, California Development Association of  
Commerce and Industry

1928

President, California State Chamber of Commerce,  
Agriculture and Industry

1929–1930



# Reuben B. Hale

President,  
Hale Brothers Stores, Inc.  
President, California Development Association of  
Commerce and Industry  
1925–1928



# A.B.C. Dohrmann

President,  
Dohrmann Commercial Company  
President, California Development Association of  
Commerce and Industry  
1924



# Charles W. Helser

Vice President,  
West Coast Life Insurance Company  
President, California Development Association of  
Commerce and Industry  
1922–1924





# James H. McDonough

President,  
Mutual Biscuit Company  
President, California Development Association of  
Commerce and Industry  
1921–1922



# Frank D. Fagan

Pacific Coast Manager,  
General Electric Company  
President, California Development Association of  
Commerce and Industry  
1920